

# MONA OFFSHORE WIND PROJECT

## Zone of Theoretical Visibility and representative viewpoint locations at 1:50,000 Scale

Deadline: 4

Application Reference: EN010137

Document Reference: S\_D4\_15

Document Number: MOCNS-J3303- RPS-10365

4 November 2024

F01



Image of an offshore wind farm

**MONA OFFSHORE WIND PROJECT**

**Document status**

<b>Version</b>	<b>Purpose of document</b>	<b>Authored by</b>	<b>Reviewed by</b>	<b>Approved by</b>	<b>Review date</b>
F01	Submission at D4	RPS	Mona Offshore Wind Ltd	Mona Offshore Wind Ltd	4 Nov 2024

**Prepared by:**

**RPS**

**Prepared for:**

**Mona Offshore Wind Ltd.**



**MONA OFFSHORE WIND PROJECT**

---

**Contents**

1 **ZONE OF THEORETICAL VISIBILITY AND REPRESENTATIVE VIEWPOINT LOCATIONS AT 1:50,000 SCALE..... 1**

1.1 Introduction ..... 1

1.2 Zone of theoretical visibility and representative viewpoint locations at 1:50,000 scale ..... 1

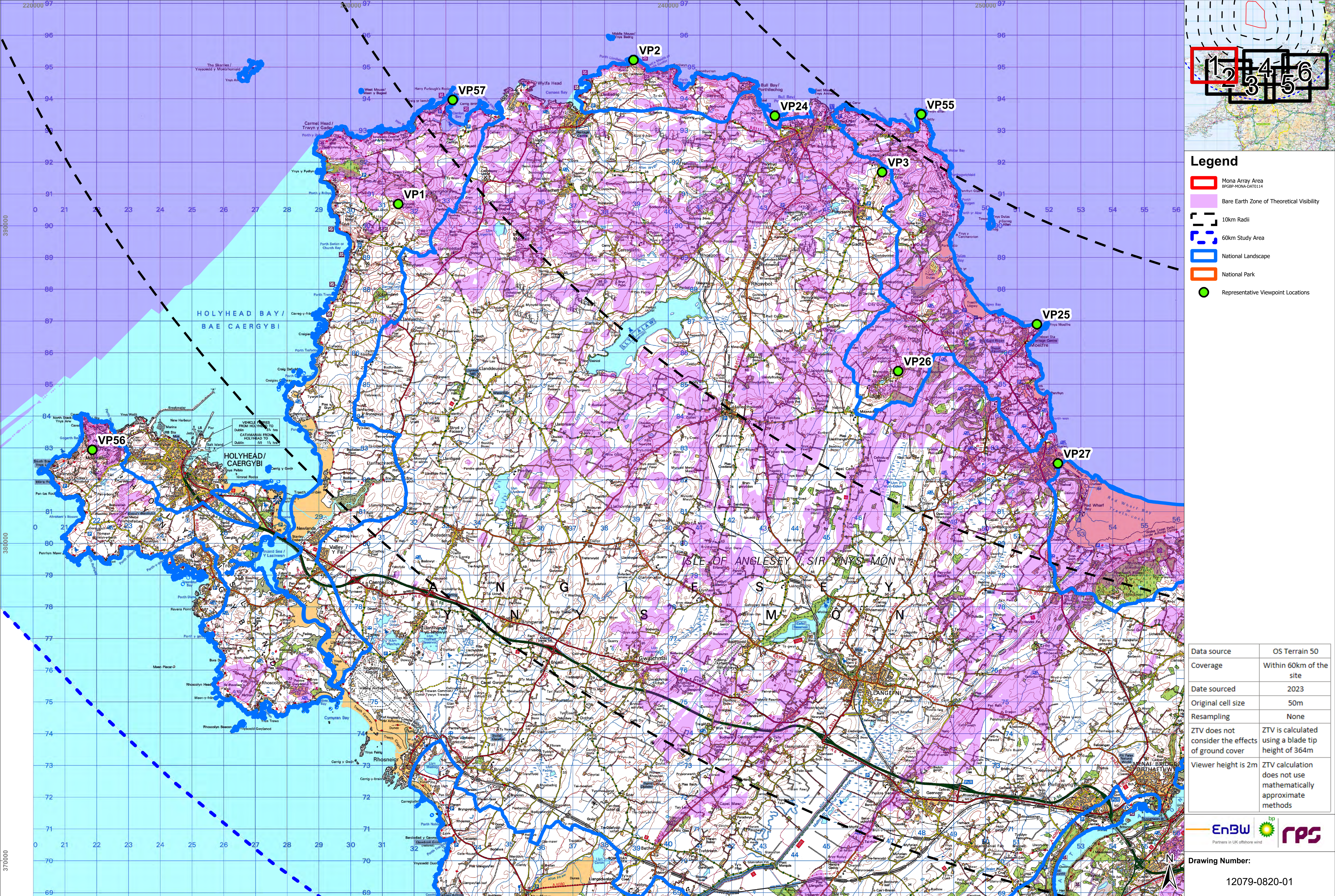
# **1 ZONE OF THEORETICAL VISIBILITY AND REPRESENTATIVE VIEWPOINT LOCATIONS AT 1:50,000 SCALE**

## **1.1 Introduction**

1.1.1.1 This document has been prepared in response to Natural Resource Wales Advisory (NRW(A)) Deadline 2 submission (REP1-056), paragraph 267 and NRW(A)'s subsequent comments on the Applicants response at Deadline 3 submission (REP3-090), paragraph 164 on the scale of the figure showing the Zone of Theoretical Visibility (ZTV) (Figure 1.1 of Volume 6, Annex 8.3: Visual Baseline Technical Report – Offshore Development (APP-101)). The Applicant subsequently met with NRW(A) on 8 October 2024 to discuss the Statement of Common Ground and the Applicant agreed to submit the ZTV on a 1:50,000 OS base.

## **1.2 Zone of theoretical visibility and representative viewpoint locations at 1:50,000 scale**





**Legend**

- Mona Array Area  
BFGP-MONA-DAT0114
- Bare Earth Zone of Theoretical Visibility
- 10km Radii
- 60km Study Area
- National Landscape
- National Park
- Representative Viewpoint Locations

Data source	OS Terrain 50
Coverage	Within 60km of the site
Date sourced	2023
Original cell size	50m
Resampling	None
ZTV does not consider the effects of ground cover	ZTV is calculated using a blade tip height of 364m
Viewer height is 2m	ZTV calculation does not use mathematically approximate methods



Drawing Number:  
12079-0820-01

**Project Name:**  
MONA OFFSHORE WIND PROJECT

**Drawing Title:**  
BARE EARTH ZTV MAP OF MONA OFFSHORE WIND PROJECT WITH NATIONALLY DESIGNATED SITES AND REPRESENTATIVE VIEWPOINTS



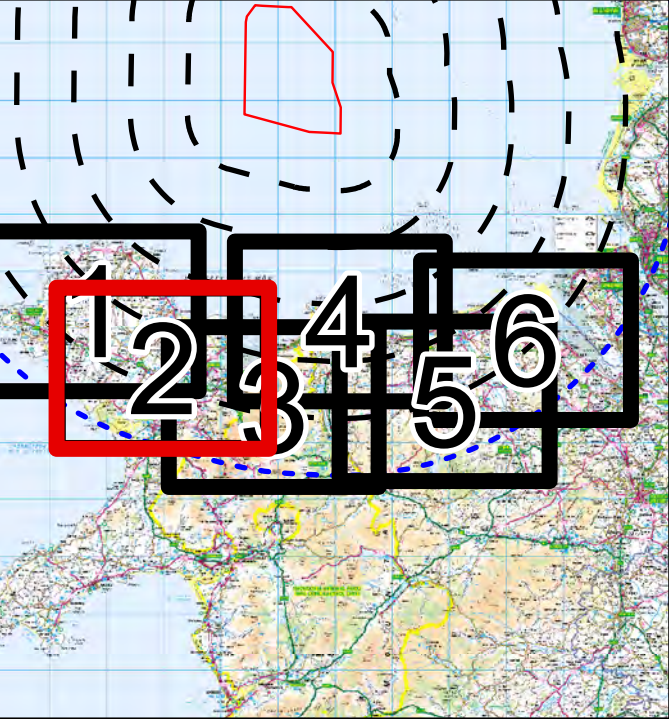
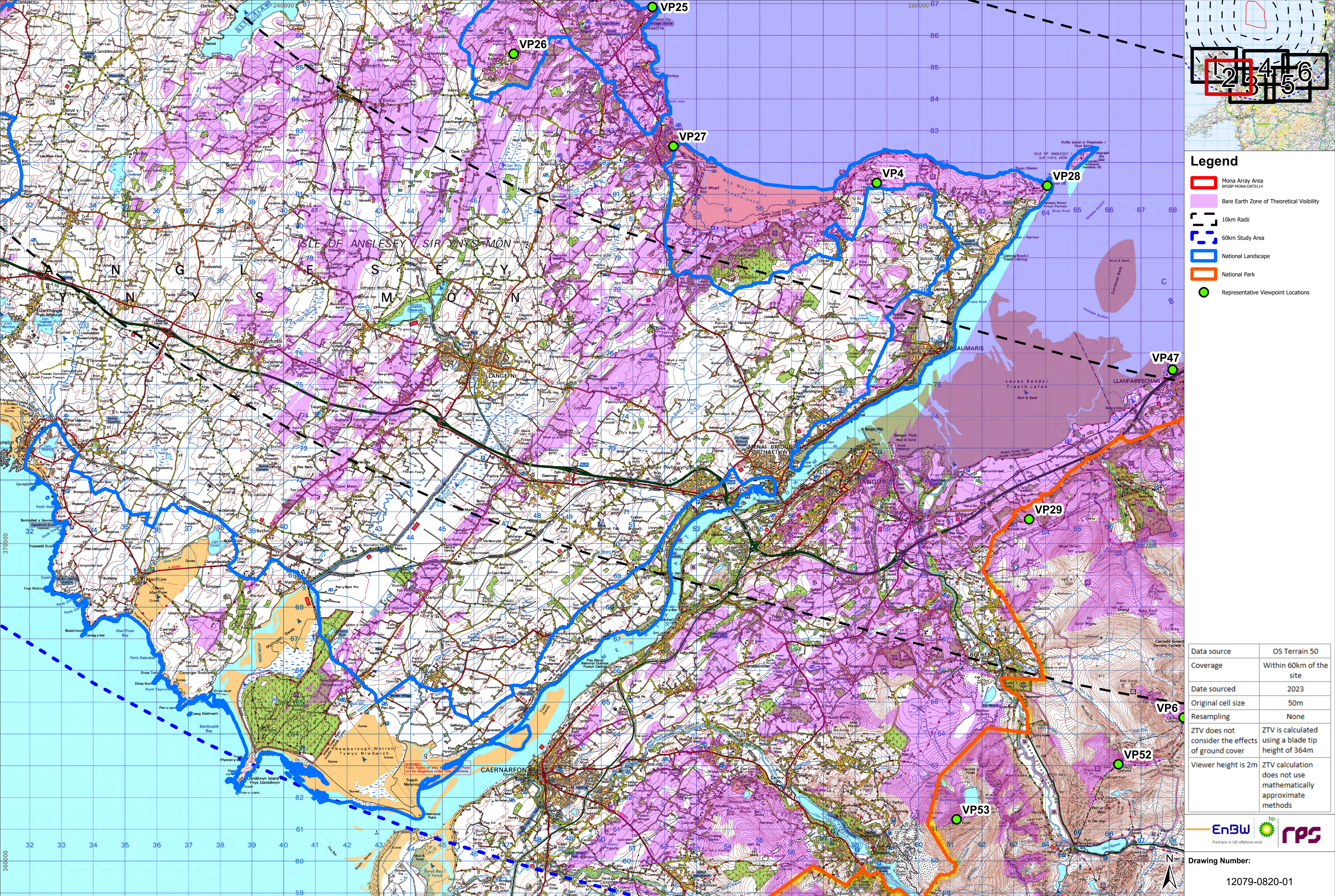
**Geodetic Information:**  
Datum: OSGB 1936  
Projection: British National Grid  
Scale@ A1: 1:50,000

**Data Sources:** Client, Natural Resources Wales, NatureScot, MMO

**Service Layer Credits:**

VER	DATE	DETAILS	BY	CHECK
01	23/10/24	FINAL	SHB	CD





### Legend

- Mona Array Area  
BPGP-MOAU-DAT0114
- Bare Earth Zone of Theoretical Visibility
- 10km Radii
- 60km Study Area
- National Landscape
- National Park
- Representative Viewpoint Locations

Data source	OS Terrain 50
Coverage	Within 60km of the site
Date sourced	2023
Original cell size	50m
Resampling	None
ZTV does not consider the effects of ground cover	ZTV is calculated using a blade tip height of 364m
Viewer height is 2m	ZTV calculation does not use mathematically approximate methods

Partners in UK offshore wind

Drawing Number:  
12079-0820-01

**Project Name:**  
MONA OFFSHORE WIND PROJECT

**Drawing Title:**  
BARE EARTH ZTV MAP OF MONA OFFSHORE WIND PROJECT WITH NATIONALLY DESIGNATED SITES AND REPRESENTATIVE VIEWPOINTS



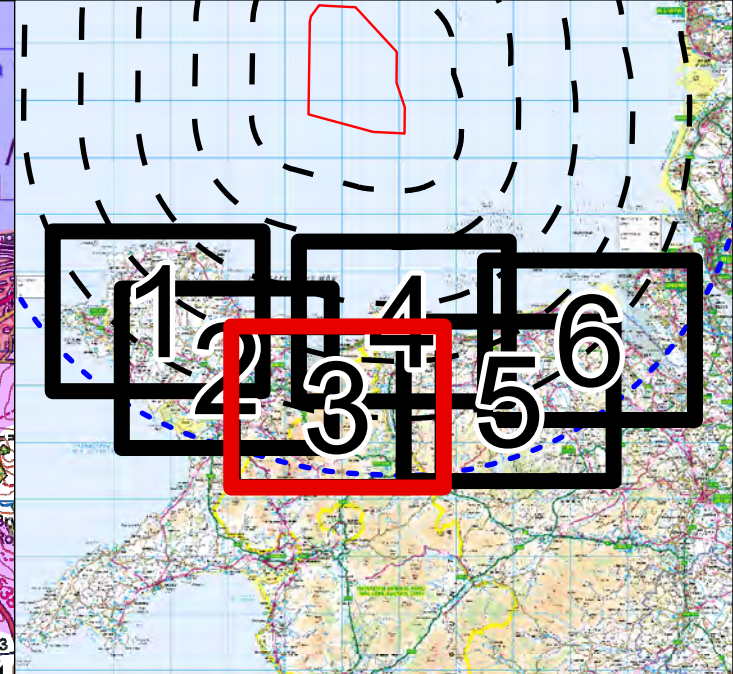
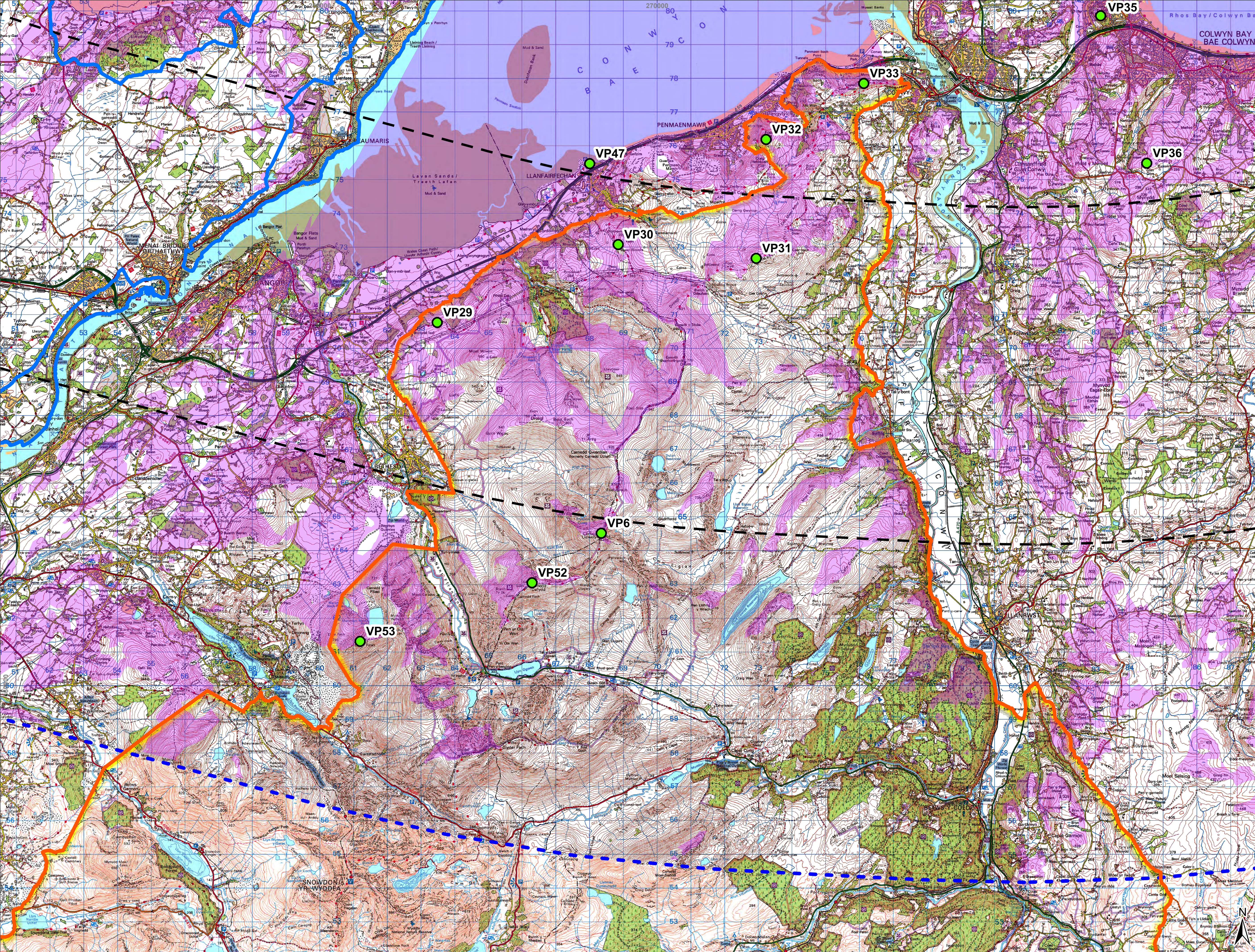
**Geodetic Information:**  
Datum: OSGB 1936  
Projection: British National Grid  
Scale@ A1: 1:50,000

**Data Sources:** Client, Natural Resources Wales, NatureScot, MMO

**Service Layer Credits:**

VER	DATE	DETAILS	BY	CHECK
01	23/10/24	FINAL	SHB	CD





- Legend**
- Mona Array Area  
BFGP-MONA-DAT0114
  - Bare Earth Zone of Theoretical Visibility
  - 10km Radii
  - 60km Study Area
  - National Landscape
  - National Park
  - Representative Viewpoint Locations

Data source	OS Terrain 50
Coverage	Within 60km of the site
Date sourced	2023
Original cell size	50m
Resampling	None
ZTV does not consider the effects of ground cover	ZTV is calculated using a blade tip height of 364m
Viewer height is 2m	ZTV calculation does not use mathematically approximate methods



**Drawing Number:**  
12079-0820-01

**Project Name:**  
MONA OFFSHORE WIND PROJECT

**Drawing Title:**  
BARE EARTH ZTV MAP OF MONA OFFSHORE WIND PROJECT WITH NATIONALLY DESIGNATED SITES AND REPRESENTATIVE VIEWPOINTS



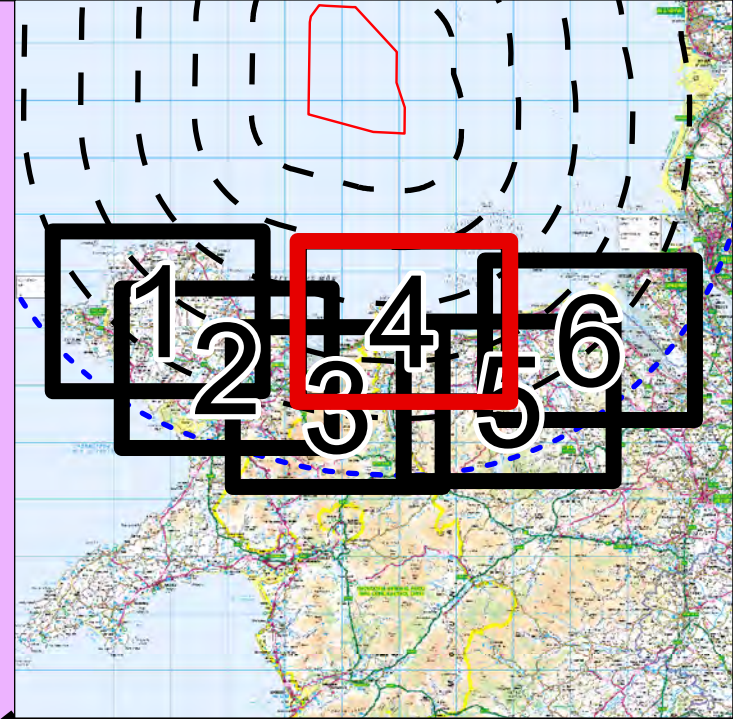
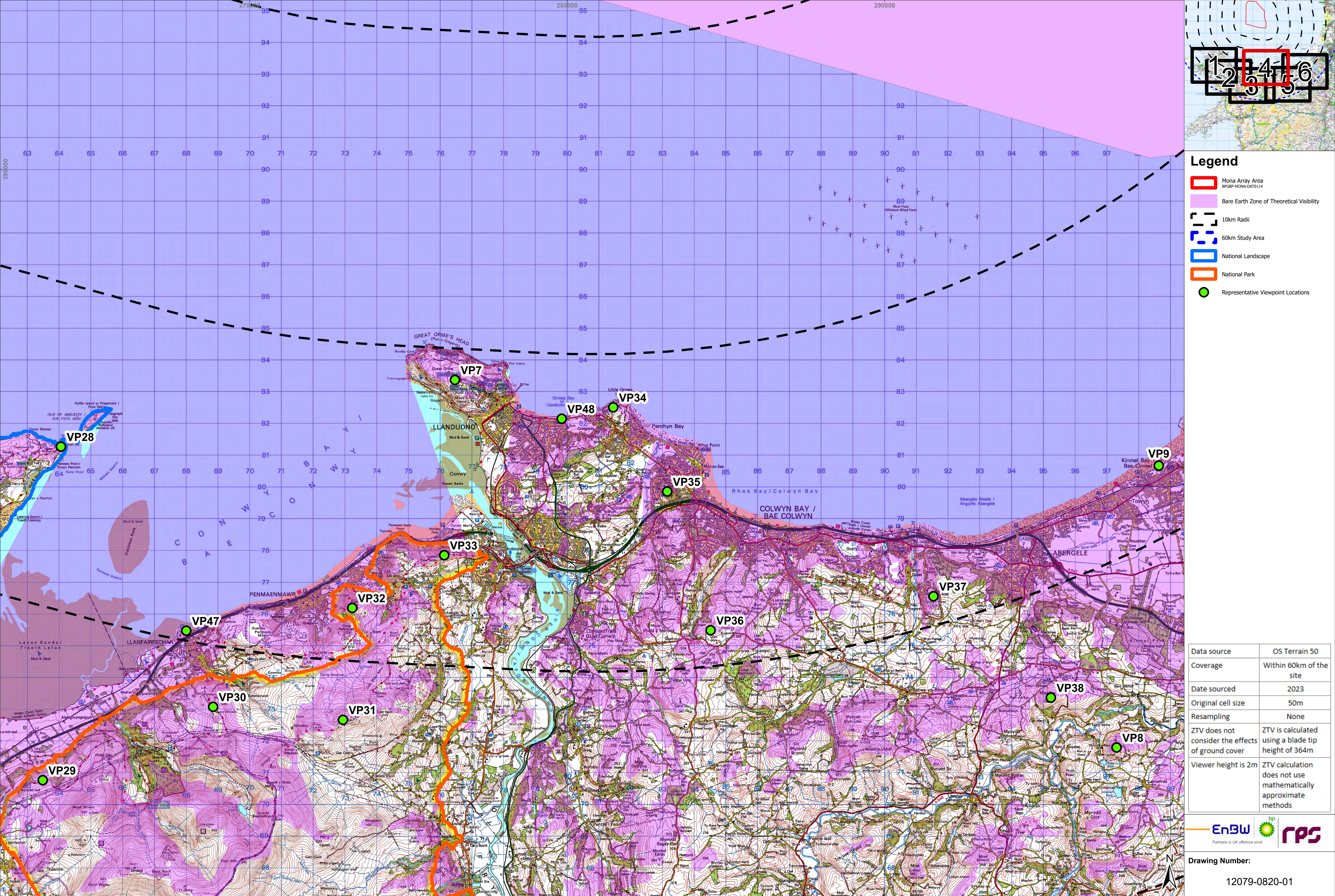
**Geodetic Information:**  
Datum: OSGB 1936  
Projection: British National Grid  
Scale@ A1: 1:50,000

**Data Sources:** Client, Natural Resources Wales, NatureScot, MMO

**Service Layer Credits:**

VER	DATE	DETAILS	BY	CHECK
01	23/10/24	FINAL	SHB	CD





- Legend**
- Mona Array Area  
BRCGP-MONA-DAT0114
  - Bare Earth Zone of Theoretical Visibility
  - 10km Radii
  - 60km Study Area
  - National Landscape
  - National Park
  - Representative Viewpoint Locations

Data source	OS Terrain 50
Coverage	Within 60km of the site
Date sourced	2023
Original cell size	50m
Resampling	None
ZTV does not consider the effects of ground cover	ZTV is calculated using a blade tip height of 364m
Viewer height is 2m	ZTV calculation does not use mathematically approximate methods



**Drawing Number:**  
12079-0820-01

**Project Name:**  
MONA OFFSHORE WIND PROJECT

**Drawing Title:**  
BARE EARTH ZTV MAP OF MONA OFFSHORE WIND PROJECT WITH NATIONALLY DESIGNATED SITES AND REPRESENTATIVE VIEWPOINTS



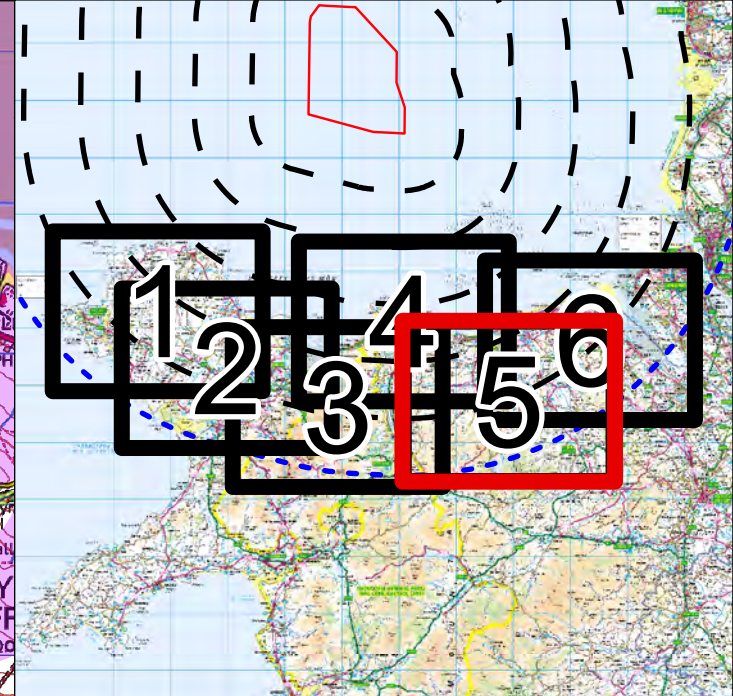
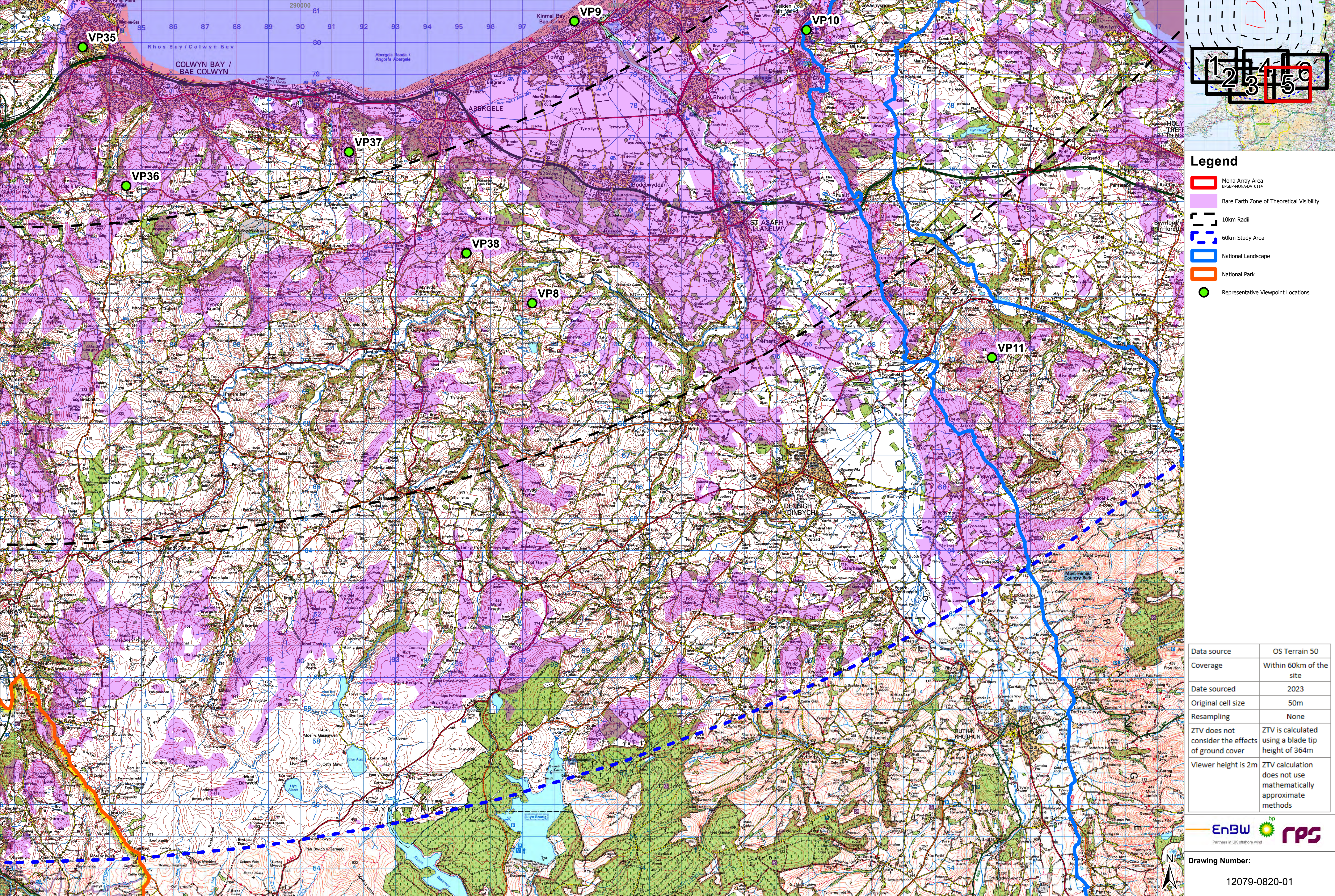
**Geodetic Information:**  
Datum: OSGB 1936  
Projection: British National Grid  
Scale@ A1: 1:50,000

**Data Sources:** Client, Natural Resources Wales, NatureScot, MMO

**Service Layer Credits:**

VER	DATE	DETAILS	BY	CHECK
01	23/10/24	FINAL	SHB	CD





**Legend**

- Mona Array Area  
BFGP-MONA-DAT0114
- Bare Earth Zone of Theoretical Visibility
- 10km Radii
- 60km Study Area
- National Landscape
- National Park
- Representative Viewpoint Locations

Data source	OS Terrain 50
Coverage	Within 60km of the site
Date sourced	2023
Original cell size	50m
Resampling	None
ZTV does not consider the effects of ground cover	ZTV is calculated using a blade tip height of 364m
Viewer height is 2m	ZTV calculation does not use mathematically approximate methods



Drawing Number:  
12079-0820-01

**Project Name:**  
MONA OFFSHORE WIND PROJECT

**Drawing Title:**  
BARE EARTH ZTV MAP OF MONA OFFSHORE WIND PROJECT WITH NATIONALLY DESIGNATED SITES AND REPRESENTATIVE VIEWPOINTS



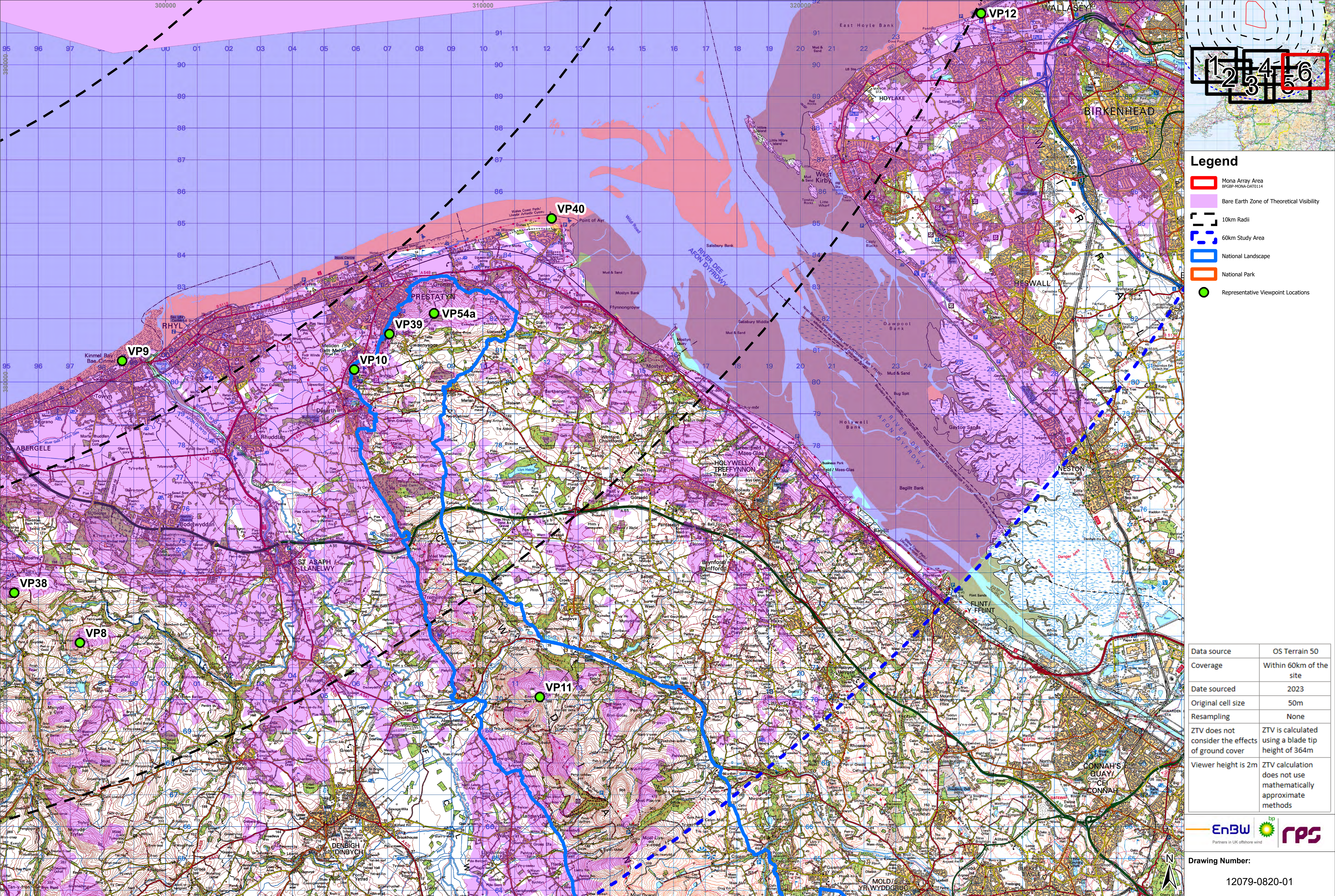
**Geodetic Information:**  
Datum: OSGB 1936  
Projection: British National Grid  
Scale@ A1: 1:50,000

**Data Sources:** Client, Natural Resources Wales, NatureScot, MMO

**Service Layer Credits:**

VER	DATE	DETAILS	BY	CHECK
01	23/10/24	FINAL	SHB	CD





- Legend**
- Mona Array Area  
BFGP-MONA-DAT0114
  - Bare Earth Zone of Theoretical Visibility
  - 10km Radii
  - 60km Study Area
  - National Landscape
  - National Park
  - Representative Viewpoint Locations

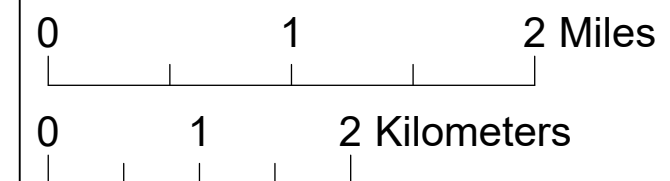
Data source	OS Terrain 50
Coverage	Within 60km of the site
Date sourced	2023
Original cell size	50m
Resampling	None
ZTV does not consider the effects of ground cover	ZTV is calculated using a blade tip height of 364m
Viewer height is 2m	ZTV calculation does not use mathematically approximate methods



Drawing Number:  
12079-0820-01

**Project Name:**  
MONA OFFSHORE WIND PROJECT

**Drawing Title:**  
BARE EARTH ZTV MAP OF MONA OFFSHORE WIND PROJECT WITH NATIONALLY DESIGNATED SITES AND REPRESENTATIVE VIEWPOINTS



**Geodetic Information:**  
Datum: OSGB 1936  
Projection: British National Grid  
Scale@ A1: 1:50,000

**Data Sources:** Client, Natural Resources Wales, NatureScot, MMO

**Service Layer Credits:**

VER	DATE	DETAILS	BY	CHECK
01	23/10/24	FINAL	SHB	CD